



A Prospective Comparative Study on Osteosynthesis Of Distal Tibial Metaphyseal Fractures With Plating V/S Intramedullary Nailing

1. Dr.G.Anvesh, 2. Dr.Koteshwar Rao Mattigunta ,3.Dr.S.Muqthiyar ahamed
Associate professor, Department of orthopaedics,Narayana medical college and hospital, Chinthareddypalem, Nellore,524003
Assistant professor, Department of orthopaedics, Narayana medical college and hospital, Chinthareddypalem, Nellore, 524003
Postgraduate resident, Department of orthopaedics Narayana medical college and hospital, Chinthareddypalem, Nellore, 524003.

Submitted: 10-01-2021

Revised: 23-01-2021

Accepted: 26-01-2021

ABSTRACT: BACKGROUND: Tibial fractures are the most common long bone fractures, while distal tibial fractures are even more complicated due to their proximity to the ankle and the close relationship with thin, soft tissue envelope and severe comminution.

OBJECTIVES: To assess and compare fractures' functional outcomes in Group A (treated with plating) versus Group B (treated with intramedullary nailing). To assess the efficacy, advantages, and disadvantages of the treatment modalities and their complications.

MATERIALS AND METHODS: This is a comparative study done from October 2018 to March 2020 in the Department of Orthopaedics, Narayana Medical College, attached to Narayana general hospital, Nellore. In this study period total of 40 patients were taken for study as per inclusion criteria. The patients are randomized into two groups of 20 cases each. Group A treated with plating, and Group B was treated with intramedullary nailing.

RESULTS: In our study, excellent results were observed in Intramedullary nailing groups (52.43%) when compared with the plating group (41.3%). These differences were statically significant with a p-value ($p < 0.05$). The mean Olerud and Molander functional score at the end of 1 year was higher for the intramedullary interlocking nail group (82.6) as compared to that for the plating group (75.4). The average duration for the radiological union in the intramedullary interlocking nail group was 20.1 ± 1.14 weeks (range 18-22 weeks), and in the plating group, it was 24.1 ± 1.16 weeks (range 22-30 weeks). Thus, the union occurred significantly

faster in the nailing group (P-value 0.001). Three patients from the plating group had delayed union. In this study, a significantly better ankle range of motion was noticed in the intramedullary interlocking nail group as compared to that of the distal tibia plating group. Average dorsiflexion at the final follow-up (12 months) was 12.8 degrees and 9.7 degrees in the intramedullary interlocking nail group and the distal tibia plating group, respectively (P value < 0.025). The average plantar flexion was 31.6 degrees and 24.7 degrees in the intramedullary interlocking nail group and the distal tibia plating group, respectively (P value < 0.001).

CONCLUSION: Intramedullary nailing has the advantages of shortened operating time, early weight-bearing (partial and full), decreased wound problems, an early union of the fracture, decreased implant-related problems, and overall reduced morbidity. Intra-medullary interlocking nail is a good and satisfactory method for the treatment of AO 43 A type distal tibia fractures

I. INTRODUCTION

Tibia is a long bone with a triangular cross-section, and it has a subcutaneous anteromedial border. The tibia is bounded by four tight fascial compartments (anterior, posterior, lateral, and deep posterior). Fractures of the distal tibia account for less than 10% of all fractures of the lower extremities. These fractures are more frequently seen in men than women and aged between 35-40 years. Additionally, distal tibial fractures are associated with posterior malleolus fractures. The management of distal tibial fractures remained challenging in orthopaedic traumatology.



By virtue of its location and subcutaneous position in the leg, the tibia is exposed to the risk of injury and open fractures. High energy trauma and poor blood supply at the lower one-third shaft of the tibia pose difficulties in bringing out optimal results.

Most of the controversy revolves around the treatment techniques regarding the choice of implants, as the indication for surgery is fairly clear. Fractures of the tibia traditionally have been managed with closed reduction and casting. Since the late 1950s, in which an adequate reduction was not obtained or maintained by conservative methods, open reduction and internal fixation (ORIF) was tried. During ORIF, excessive tissue dissection and devitalization are seen, which creates problems in wound healing and can lead to infection. Due to this, other less invasive methods were developed to treat fractures of the distal tibia¹. A briefer period of disability and early return to regular activities, with a shorter time to the union, can be attained by accurate closed intramedullary (IM) nailing compared to patients managed by locking plate.

This study compares the radiographic and clinical results of patients with extra-articular distal one-third tibial shaft fracture, treated with intramedullary interlocking nailing and those treated by distal tibia locking plate and assess the complications in both the treatment modalities^(2,3)

II. AIMS AND OBJECTIVES

1. To assess and compare the functional outcomes of fractures in Group A (treated with plating) versus Group B (treated with intramedullary nailing).
2. To assess the complications of both procedures

III. METHODOLOGY

Study design: Prospective randomized control trial.

Study subjects: 40 cases will be studied

Inclusion criteria:

- 1) Age of the patients: 21 to 60 years
- 2) Closed displaced fracture of the distal tibia
- 3) Open fractures of the distal tibia (Gustillo Anderson grade I&II)

Exclusion criteria:

- 1) Age of the patients <21 and >60 years
- 2) Pathological fractures
- 3) Presence of infection at the fracture site.
- 4) Patient unfit for surgery due to various medical reasons
- 5) Gustillo Anderson type III
- 6) Associated fractures of talus, calcaneum
- 7) Intra-articular fractures

- 8) An associated proximal tibia fracture
- 9) Segmental fracture of the tibia
- 10) The patients who are not willing to give consent to participate in the study

Study setting:

Department of Orthopaedics, Narayana general hospital attached to Narayana Medical College, Nellore. Ethical clearance was received before the beginning of the study from Ethical Clearance Committee.

Study period: 18 months duration (Oct 2018 to March 2020)

Study procedure:

A total of 40 patients will be taken for study as per inclusion criteria.

The patients will be divided into two groups 20 cases each.

Group A will be treated with plating and group B will be treated with intramedullary nailing.

Plating group include patients managed by distal tibia medial locking plate by minimally invasive method, and Nailing group include patients managed with closed reduction and reamed intramedullary nailing.

A detailed questionnaire shall be duly completed for each case.

The questionnaire shall include information on the age, occupation, smoking status, etc. Detailed history, general physical examination, systemic and local examination and tests will be recorded as per the proforma.

Complications include preoperative, intraoperative, immediate & late stage.

All fibula fractures within 7 cms of ankle joint are fixed with plating. Postoperatively, the operated limb was immobilized in plaster splint in all the cases for two weeks till soft tissue oedema was settled. Static quadriceps exercises were started within a slab. After 2 weeks plaster splint was removed and patients were instructed strict non-weight-bearing walking with crutch or walker. At the end of six weeks, radiographs were taken and weight-bearing was initiated only after signs of callus are seen on radiographs.

Patients are followed on 6th week and then every 3 months till 1 year. Mal-alignment was described as >5° varus/valgus deformity, >5° ante-/recurvation or >15° rotation. Delayed union was described as radiographic union >24 weeks. Functional outcome was done by Olerud and Molander functional evaluation score (% of normal)⁴



IV. RESULTS

A total of 40 patients are included in this study, 20 patients were operated with distal tibia locking plate (Plating group) and 20 operated with Intramedullary interlocking nail (Nailing group).

1. Age distribution:

Out of 20 who have undergone plating procedure, the majority were from 41-50 years age i.e. 8 (40%) followed by 7 (35%) from 31-40 years age group. Out of 20 who have undergone Intramedullary nailing procedure, the majority were from 31-40 years age, i.e. 9 (45%) followed by 6(30%) from 41-50 years age group

Mean age of patients from the plating group was 36.42 ± 12.72 years, while the mean age of patients from IM nailing was 42.56 ± 11.93 years.

2. Sex distribution: In both the study groups, the majority were males (85%)in plating and 90% in Intramedullary nailing)

3. Mode of injury: Commonest cause of injury was road traffic accident in 15 (75%) and 14(70%) in plating and Intramedullary nailing group respectively.

4. Concomitant Fibula Fracture was observed in both the intervention groups approximately similar in number. i.e. 90% and 75%.

Both the groups did not vary significantly with regard to the age group of patients, mode of injury, sex distribution, type of fracture or associated fibula fracture.

5. In our study in the plating group, 80% of patients had closed fractures, 15% had Gustilo Anderson type I fracture. In Intramedullary nailing group, 75% of patients had closed fractures, 20% had Gustilo Anderson type I fracture

6. Mean operative time in surgery of patients from Intramedullary nailing was 76.21 ± 9.9 minutes while in patients from the plating group was 91.02 ± 10.5 minutes

7. Mean hospitalization days in patients from Intramedullary nailing was 7.21 ± 2.3 days while in patients from plating group was 9.66 ± 3.2 days

8. Time to full weight bear: The average duration following which patients could be allowed to bear full weight on the operated leg was 13.7 ± 1.12 weeks (range, 13-17 weeks) in nailing

group and 17.8 ± 0.94 weeks(range 16-20 weeks) in plating group. The patients in the intramedullary interlocking nail group were able to bear weight on the operated limb in a significantly lesser time (P-value <0.005).

9. Time to union: The average duration for the radiological union in the intramedullary interlocking nail group was 20.1 ± 1.14 weeks(range 18-22 weeks) and in the plating group it was 24.1 ± 1.16 weeks (range 22-30 weeks). Thus, the union occurred significantly faster in the nailing group (P-value 0.001). Three patients from the plating group had delayed union.

10. Ankle range of motion: In the present study, a significantly better ankle range of motion was noticed in the intramedullary interlocking nail group as compared to that of distal tibia plating group. Average dorsiflexion at the final follow-up (12 months) was 12.8 degrees and 9.7 degrees in the intramedullary interlocking nail group and the distal tibia plating group respectively(P value<0.025). The average plantar flexion was 31.6 degrees and 24.7 degrees in the intramedullary interlocking nail group and the distal tibia plating group, respectively (P value< 0.001).

11. Functional outcome assessment: The mean Olerud and Molander functional score at the end of 1 year was higher for the intramedullary interlocking nail group (82.6) as compared to that for the plating group (75.4). Both the groups had good results with a slightly better outcome in intramedullary interlocking nail group, though not significantly different.

12. Five cases from Intramedullarynailing and 1 case from the plating group had significant valgus (6° - 10°). Other patients either had no varus/valgus or had acceptable 5° varus /valgus

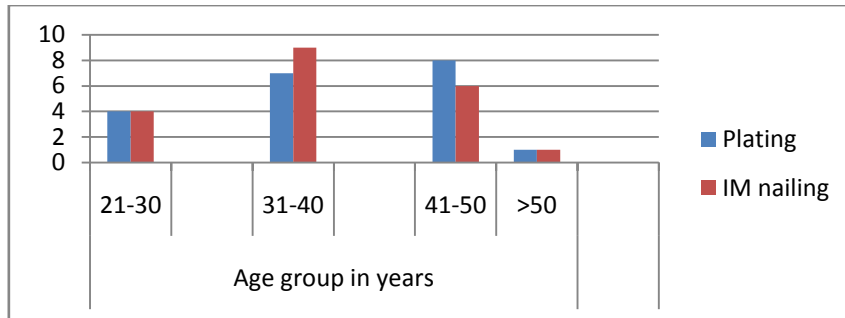
13. Complications: The only post-operative complication seen in this study was an infection at the operative site in 2 patients (10%), all in the plating group. No infection noted in nailing group.

14. Secondary procedures: In this study, one patient required vacuum-assisted closure of the wound and one patient had fibula plate removal due to persistent wound problems. All two patients belong to the plating group.



Age group in years	Plating	IM nailing
21-30	4	4
31-40	7	9
41-50	8	6
>50	1	1
Total	20	20

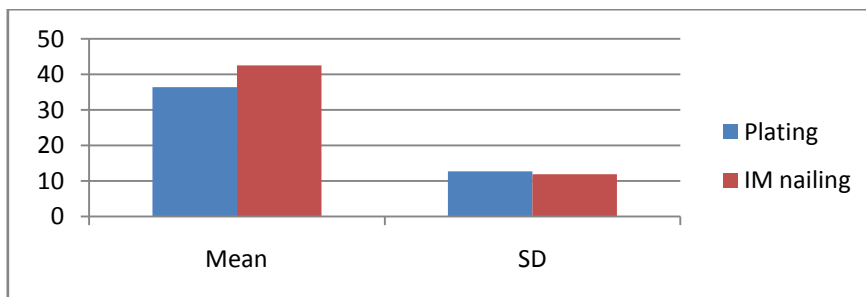
Table 1: Age distribution of patients



Graph 1: Bar diagram showing Distribution according to age group

Comparison of mean age	Mean	SD
Plating	36.42	12.72
IM nailing	42.56	11.93

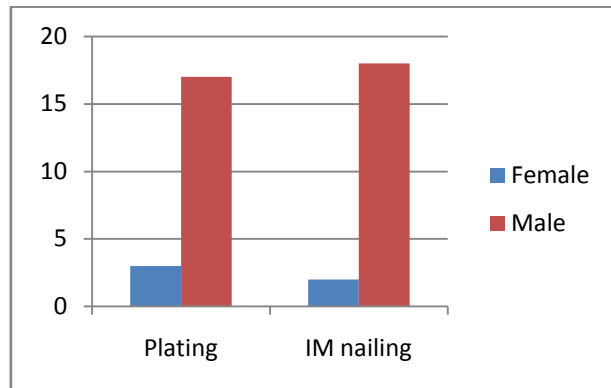
Table 2: Distribution according to comparison of mean age between two groups



Graph 2: Bar diagram showing Distribution according to the comparison of the mean age between two groups

GENDER	Plating	IM nailing
Female	3	2
Male	17	18
Total	20	20

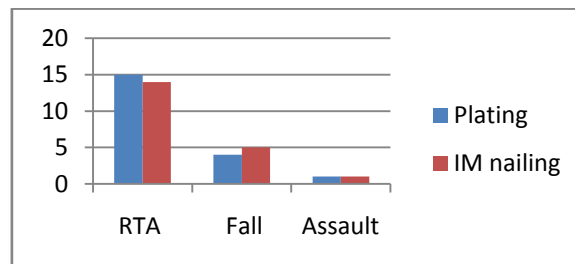
Table 3: Distribution according to gender



Graph 3: Bar diagram showing Distribution according to gender

Type of injury	Plating	IM nailing
RTA	15	14
Fall	4	5
Assault	1	1
Total	20	20

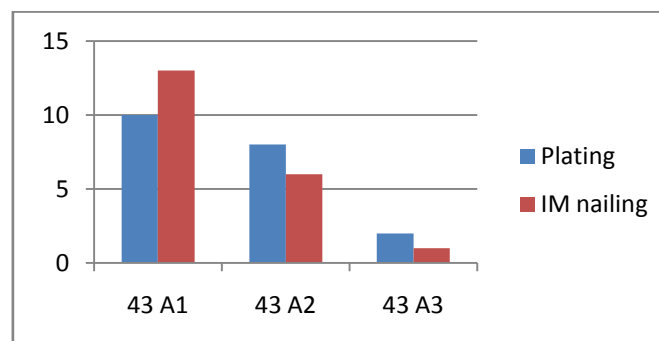
Table 4: Distribution according to mode of injury



Graph 4: Bar diagram showing Distribution according to mode of injury

TYPE OF FRACTURE	Plating	IM nailing
43 A1	10	13
43 A2	8	6
43 A3	2	1
Total	20	20

Table 5: Distribution according to type of fracture

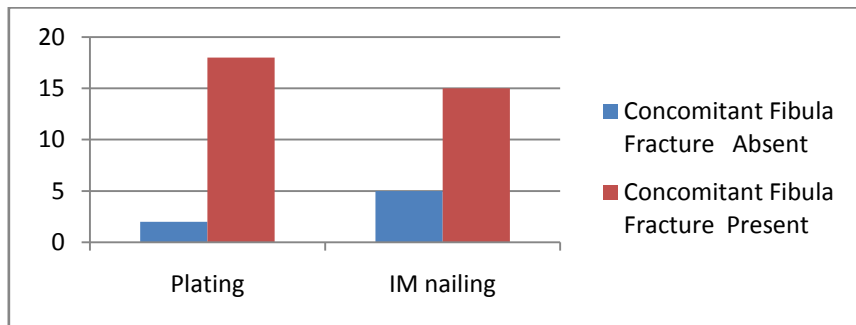


Graph 5: Bar diagram showing Distribution according to type of fracture



Concomitant Fibula Fracture	Plating	IM nailing
Absent	2	5
Present	18	15
Total	20	20

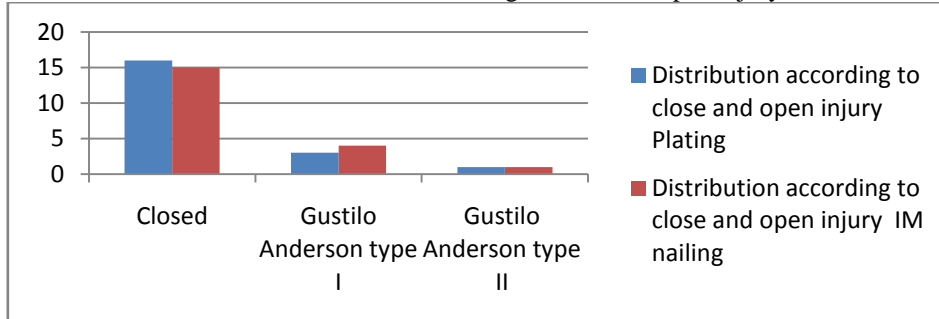
Table 6: Distribution according to Concomitant Fibula Fracture



Graph 6: Bar diagram showing Distribution according to Concomitant Fibula Fracture

Fracture Type	Plating	IM nailing
Closed	16	15
Gustilo Anderson type I	3	4
Gustilo Anderson type II	1	1
Total	20	20

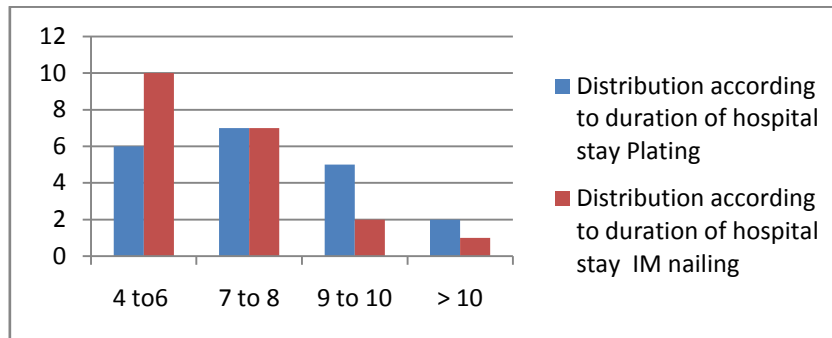
Table 7: Distribution according to close and open injury



Graph 7: Bar diagram showing Distribution according to close and open injury

Duration (in days)	Plating	IM nailing
4 to 6	6	10
7 to 8	7	7
9 to 10	5	2
> 10	2	1
Total	20	20

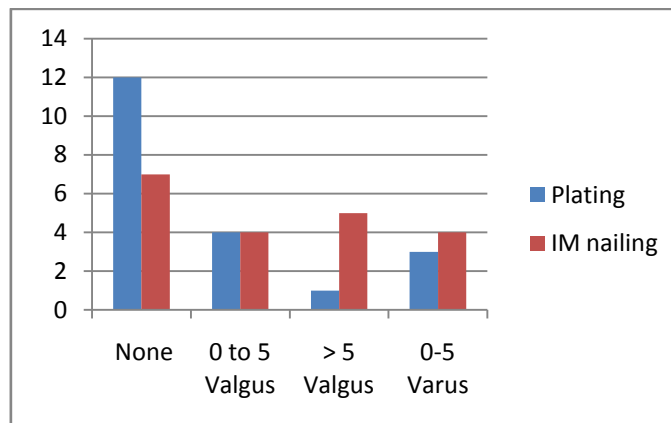
Table 8: Distribution according to duration of hospital stay



Graph 8: Bar diagram showing Distribution according to duration of hospital stay

	Plating	IM nailing
None	12	7
0 to 5 Valgus	4	4
> 5 Valgus	1	5
0-5 Varus	3	4

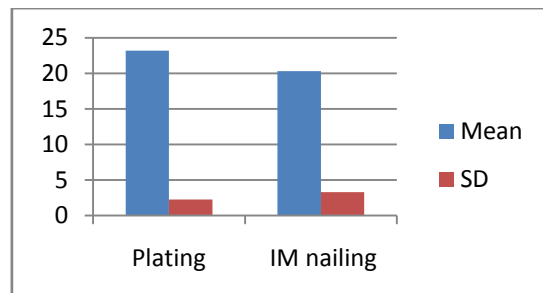
Table 9: Distribution according to valgus/varus deformity



Graph 9: Bar diagram showing Distribution according to valgus/varus deformity

	Mean	SD
Plating	23.21	2.26
IM nailing	20.33	3.27

Table 10: Distribution according to comparison of mean weeks for bone union between two groups



Graph 10: Bar diagram showing Distribution according to comparison of mean weeks for bone union between two groups

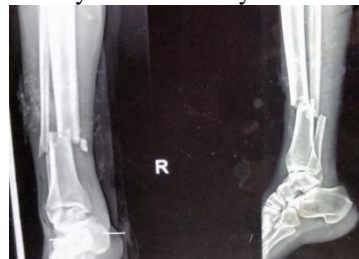


Ankle range of motion	Nailing Group(degrees)	Plating Group(degrees)
Dorsiflexion	12.8	9.7
Plantar flexion	31.6	24.7

Table 11: Outcome of patients in both groups Dorsiflexion Plantar flexion Functional evaluation

Functional evaluation	Nailing Group	Plating Group
Excellent (91-100)	6	4
Good (61-90)	12	11
Fair (31-60)	2	5
Poor (0-30)	0	0

Table 12: Olerud and Molander functional evaluation score
CASE:Distal one third tibial fracture treated by intramedullary interlocking nail



Preoperative



Immediate Post opx ray



After union at 17 weeks



CASE:Distal one third tibial fracture treated by plating



Preoperative



Immediate Post op x ray



After union at 20 weeks

V. DISCUSSION:

Distal tibia fractures are the most common significant lower extremity injuries. A high percentage of good results were obtained with accurate open reduction or closed reduction techniques with stable internal fixation by using AO principles and methods for fixation of distal tibia fractures.

Since soft tissue and periosteum are commonly damaged in distal tibial fractures, large incisions could further increase this damage. Though plate fixation achieves rigid fixation and has been widely used in past years, the technique requires extensive wound exposure and soft tissue dissection, which limits its clinical application. With the advantage of minimally invasive,

symmetric and dynamic fracture fixation, IM nailing is a better choice for the management of distal tibial fractures. The fact that extraosseous soft tissue could not provide sufficient blood supply, is one of the major factors which supposed to cause delayed union or nonunion in the fractured bones. In addition, the lack of the arterial supply to the distal tibia contributes to the explanation for more common incidence of delayed union or nonunion in tibia fracture. IM nailing treatment could benefit the distal tibial fracture for it preserves the integrity of the surrounding soft-tissue and vascular supply, and thus promotes the biological bone healing. For this account, in the management of distal tibial fractures, IM nailing might possess the advantages of saving operative



time, decreased blood loss as well as reducing the incidence of infections. For instance, compared to the fixation with a cast, closed IM nailing was associated with a shorter operative time. Meanwhile, static reamed IM nailing is reported to faster the radiographic union and shorter the time from trauma to surgery than minimally invasive plate osteosynthesis (MIPO). Despite these desirable results of IM nailing in above assessment indexes, IM nailing could also cause some unsatisfactory effects because IM nailing allows micro-motion, which induces callus formation. Biomechanically, even reamed IM nailing could not match well to the lenient medullary canal of the tibia metaphysis, and the lack of adequate purchase of locking screws is apt to result in the failure to gain or maintain the tibial alignment. This may contribute to the higher incidence of malunion with IM nailing than with plate. In the management of distal tibial metaphyseal fracture, IM nailing is linked to many complications such as malreduction and malunion. Moreover, IM nailing is convinced to have a remarkable higher incidence of malunion than percutaneous locked plate. Consistent with these results, our analysis showed that IM nailing achieved a significant higher incidence of malunion than plate.

Age distribution

Mean age of patients from Intermedullary nailing was 36.42 ± 12.72 years while mean age of patients from plating group was 42.56 ± 11.93 years. The difference in mean age was found to be not significant ($p > 0.05$).

Author	Plating	IM nailing
Mayank Mahendra et al ⁵	41.90 ± 15.27	41.04 ± 14.07
Baral R et al ⁶	46.11 ± 16.116	37.38 ± 12.18
Present study	36.42 ± 12.72	42.56 ± 11.93

Table 13: Comparison of different studies according to age wise distribution

Distribution according to mode of injury

Commonest cause of injury was road traffic accident in 15 (75%) and 14 (70%) in plating and Intramedullary nailing group respectively. The difference in cause of injury was not significant ($p > 0.05$).

Author	RTA
Pawar E D et al ⁷	60%
Holagundi L et al ⁸	73%
Mayank Mahendra et al ⁵	67%
Present study	73%

Table 14: Comparison of different studies according to mode of injury, RTA being the most common

Mean surgery time

Mean operative time in surgery of patients from Intermedullary nailing was 76.21 ± 9.9 minutes while in patients from plating group was 91.02 ± 10.5 minutes. The difference in mean time duration between both groups was found to be significant ($p < 0.05$).

Author	IL group	Plating group
Li Y et al ⁹	60 minutes	70 minutes
Guo et al ¹⁰	81.2 minutes	97.9 minutes
Mayank Mahendra et al ⁵	79.00 ± 5.59 minutes	94.50 ± 10.11 minutes
Present study	76.21 ± 9.9 minutes	91.02 ± 10.5 minutes

Table 15: Comparison of different studies according to duration of surgery

Mean duration hospitalization

Mean hospitalization days in patients from Intermedullary nailing was 7.21 ± 2.3 days while in patients from plating group was 9.66 ± 3.2 days. The difference in mean time duration was found to be significant ($p < 0.05$).

Author	Plating group	IL group
Mayank Mahendra et al ⁵	9.86 ± 3.2 days	7.01 ± 2.3 days
Li Y et al ⁹	8.9 ± 3.1 days	5.8 ± 2.1 days
Present study	9.66 ± 3.2 days	7.21 ± 2.3 days

Table 16: Comparison of different studies according to mean hospitalization stay



Duration of full weight bearing

Full Weight bearing initiation after surgery of patients from Intermedullary nailing was 13.7 ± 1.12 weeks while in patients from plating group was 17.8 ± 0.94 weeks. The difference in mean time duration was found to be significant ($p < 0.05$). It means intermedullary group patients started early weight bearing compared with plating method patients.

Author	Interlocking (weeks)	Plating (weeks)
Present study	13.7 ± 1.12	17.8 ± 0.94
Mayank Mahendra et al ⁵	14.13 ± 2.22	17.2 ± 2.1
DV Prasad et al ¹¹	10.09 ± 1.41	13.38 ± 1.24

Table 17: Comparison of different studies according to full weight bearing after surgery

Duration of bone union:

In our study we observed that mean weeks for bone union after surgery of patients from Intermedullary nailing was 20.11 ± 1.14 weeks while in patients from plating group was 24.1 ± 1.16 weeks. The difference in mean time duration was found to be significant ($p < 0.05$)

Author	Interlocking (weeks)	Plating (weeks)
Mayank Mahendra et al ⁵	20.33 ± 3.27 weeks	23.21 ± 2.26 weeks
Li Y et al ⁹	21.3 ± 3.5	23.1 ± 3.6
Vaza J V et al ¹²	23.45 weeks	26 weeks
Pawar E D et al ⁷	17.43 weeks	21.40 weeks
Mihir R Solanki et al ¹³	19.1 weeks	23.8 weeks
Kasper W et al. ¹⁴	19 weeks	21 weeks
Present study	20.1 ± 1.14 weeks	24.1 ± 1.16 weeks

Table 18: Comparison of different studies as per time taken for radiological union

Range of movements

Significantly, lower mean range of dorsiflexion and plantar flexion observed in the plating group could be attributed to stripping of the

muscles and tendons during open reduction in those patients in which reduction was difficult by closed means while plating

Author	Average dorsiflexion (In degrees)		Average plantar flexion (In degrees)	
	Interlocking	Plating	Interlocking	Plating
Mihir R Solanki et al ¹³	12.6	9.6	32.4	25.0
Present study	12.8	9.7	31.6	24.7

Table 19: Comparison of different studies according to range of movements

Olerud and Molander scoring system.

In our study, excellent results were more common in Intermedullary nailing groups (86%), compared to plating group (71%). These differences were statistically significant $p < 0.05$.

Author	nailing group	plating group
Mihir R Solanki et al ¹³	88%	72%
GI et al. ¹⁵	88.5%	88.2%
Present study	86%	71%

Table 20: Comparison of different studies according to Olerud and Molander scoring system

Postoperative complications

Postoperative complication like wound infection (10%), delayed union (20%) and deep infection as well as wound dehiscence (10%) were more in plating group than in Interlocking group. Mal-alignment (25%) and anterior knee pain (20%) was more common in Interlocking group. ($P > 0.05$)

Author	Total number of complications
Krishan A et al. ¹⁶	2
Egol KA et al. ¹⁷	2
Present study	2

Table 21: Comparison of different studies according to complications



VI. CONCLUSION

1. Intramedullary nailing has the advantage of shortened operating time, early weight bearing (both partial and full), decreased wound related problems, early union of the fracture, decreased implant related problems and overall reduced morbidity
2. In osteosynthesis of displaced extra-articular distal tibia metaphyseal fractures OTA/AO Type 43-A both modalities nailing as well as plating deserve a place. However, in present study IL nailing showed better outcome as it offers advantage in terms of mean operating time, less invasive surgery, hospital stay, partial & full weight bearing time and union time.

BIBLIOGRAPHY

- [1]. Toivanen JA, Honkonen SE, Koivisto AM, Järvinen MJ. Treatment of low-energy tibial shaft fractures: plaster cast compared with intramedullary nailing. *International orthopaedics*. 2001 Apr 1;25(2):110-3..
- [2]. Megas P, Zouboulis P, Papadopoulos AX, Karageorgos A, Lambiris E. Distal tibial fractures and non-unions treated with shortened intramedullary nail. *International orthopaedics*. 2003 Dec 1;27(6):348-51..
- [3]. Nork SE, Schrick JL, Schwartz AK, Agel J, Holt SK, Winquist RA. Intramedullary nailing of distal metaphyseal tibial fractures. *JBJS*. 2005 Jun 1;87(6):1213-21.
- [4]. Olerud C, Molander H. A scoring scale for symptom evaluation after ankle fracture. *Archives of orthopaedic and traumatic surgery*. 1984 Sep 1;103(3):190-4.
- [5]. Mahendra M, Singh R. Reamed Intramedullary Nailing Versus Anatomic Plating by MIPO in Distal Tibia Extra-Articular Metaphyseal Fracture. *Journal of Clinical & Diagnostic Research*. 2018 Jun 1;12(6).
- [6]. Baral R, Raj KP. A preliminary comparison between intramedullary interlocking nail and minimally invasive plate osteosynthesis in extra-articular distal tibia fractures: a retrospective study. *SA Orthopaedic Journal*. 2017 Dec;16(4):54-8.
- [7]. Pawar ED, Agrawal SR, Patil AW, Choudhary S, Asadi G. A comparative study of IMIL and locking plate fixation in the management of extra articular distal tibial fractures. *Journal of Evolution of Medical and Dental Sciences*. 2014 Jun 16;3(24):6812-27..
- [8]. Holagundi L, Deepak S, Dayanad. Ramachandra. Functional Outcome with Surgical Management in Distal Tibia Fracture. *IOSR Volume 13, Issue 5 Ver. V. (May. 2014), PP 83-90*
- [9]. Li Y, Liu L, Tang X, Pei F, Wang G, Fang Y, Zhang H, Crook N. Comparison of low, multidirectional locked nailing and locking plating in the treatment of distal tibial metadiaphyseal fractures. *International orthopaedics*. 2012 Jul 1;36(7):1457-62.
- [10]. Guo JJ, Tang N, Yang HL, Tang TS. A prospective, randomised trial comparing closed IM nailing with percutaneous plating in the treatment of distal metaphyseal fractures of the tibia. *The Journal of bone and joint surgery. British volume*. 2010 Jul;92(7):984-8..
- [11]. DV Prasad, Dr. Mahammad Akram A Saji, Dr. Ranjan Kumar Gupta, Dr.Pushpak Kumar, Dr. Siddharth Shah and Dr. Ankit GopikishanLohiya. 101 Comparative study of intramedullary interlocking nailing and minimally invasive percutaneous plate osteosynthesis (MIPO) in extra articular distal tibial Fracture. *International Journal of Orthopaedics Sciences* 2017; 3(3): 436-439
- [12]. Vaza JV, Chauhan BR, Chauhan GR, Chauhan PR. COMPARATIVE STUDY OF PLATING VERSUS NAILING IN DISTAL TIBIA METAPHYSEAL FRACTURES. *Natl J Med Res*. 2014;4(4):340-4.
- [13]. Solanki MR, Patil SR, Chanchpara GC, Alwani PL, Pawar JB. A comparative study of plating versus nailing in distal tibia metaphyseal fracture. *International Journal of Orthopaedics*. 2017;3(2):86-9.
- [14]. Janssen KW, Biert J, van Kampen A. Treatment of distal tibial fractures: plate versus nail. *International orthopaedics*. 2007 Oct 1;31(5):709-14.
- [15]. Im GI, Tae SK. Distal metaphyseal fractures of the tibia: a prospective randomized trial of closed reduction and IMIL versus open reduction and plate and screws fixation. *Journal of Trauma and Acute Care Surgery*. 2005 Nov 1;59(5):1219-23.
- [16]. Krishan A, Peshin C, Singh D. Intramedullary nailing and plate osteosynthesis for fractures of the distal metaphyseal tibia and fibula. *Journal of Orthopaedic Surgery*. 2009 Dec;17(3):317-20.
- [17]. Egol KA, Weisz R, Hiebert R, Tejwani NC, Koval KJ, Sanders RW. Does fibular plating improve alignment after intramedullary nailing of distal metaphyseal tibia fractures?. *Journal of orthopaedic trauma*. 2006 Feb 1;20(2):94-103.