



Eruptive Vellus Hair Cyst: A Case Report

Dr.Aswathy.P(junior resident) , Dr.S.Sankar(Professor & HOD ,Govt. medical college , kottayam)

Date of Submission: 23-06-2020

Date of Acceptance: 11-07-2020

ABSTRACT

Eruptive vellus hair cyst is a rare follicular developmental abnormality of vellus hair follicle. It is usually seen in children, but can occur at any age. Most common site is the chest region. Local excision is the treatment of choice. We report the case of a 66 year old male presented with multiple papules over the face. Histopathological examination of one of the papule was done and the diagnosis of eruptive vellus hair cyst was made.

KEY WORDS: Eruptive vellus hair cyst, hair follicle

I. INTRODUCTION

Eruptive vellus hair cysts are small papules containing vellus hairs. They are likely to be familial when they occur in early childhood. Usual site of the lesion is central chest. Both sexes are equally affected. It is a developmental abnormality of vellus hair follicle that predispose them to occlusion at infundibular level which results in retention of hair

,cystic dilatation of proximal part of the follicle and secondary atrophy of the hair bulb. In the present study, a case report of a man with eruptive vellus hair cyst of face is discussed.

II. CASE REPORT

A 66 year old male with past history of Type II diabetes mellitus presented to the dermatology OPD with multiple brown to black coloured swellings over face since one year. No pain or increase in the size of the swelling was noted. No similar history was present in the family. A clinical diagnosis of naevus was made. Excision biopsy was taken from one of the papule below left orbital region. Histopathological examination showed skin with mid dermis showing multiple cysts lined by stratified squamous epithelium containing laminated keratin material and varying number of transversely and obliquely cut hairshafts. The final diagnosis was given as eruptive vellus hair cyst and the patient is kept under follow up.

Microscopy

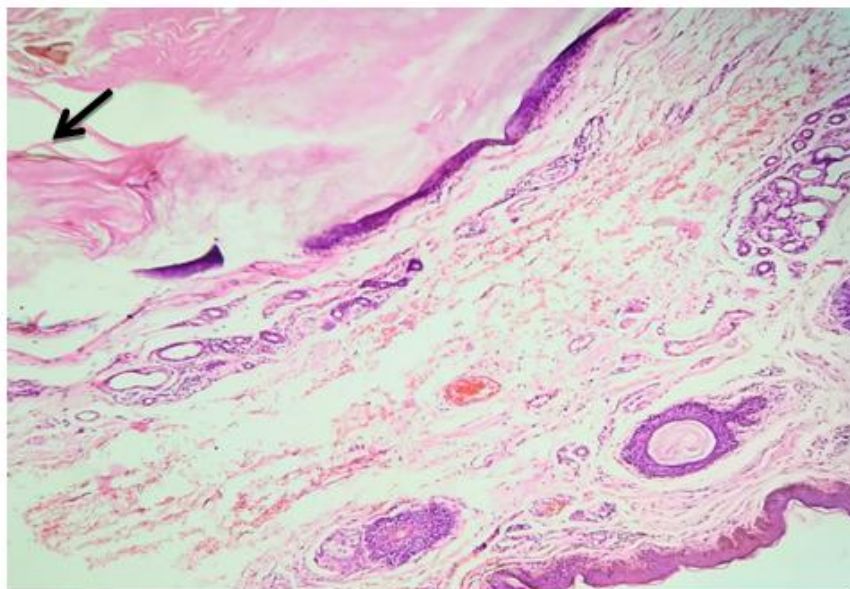


Fig 1(10x)

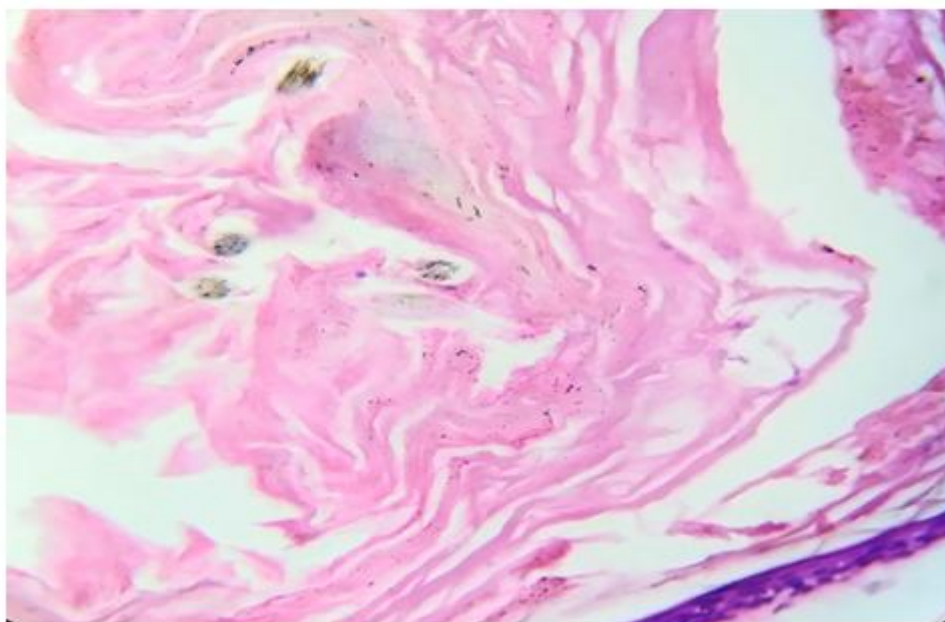


fig.2 (40x)

Fig 1&2 : cyst lined by stratified squamous epithelium containing laminated keratin material and vellus hair.

III. DISCUSSION

Eruptive vellushair cyst was first described in 1977. It is a rare follicular developmental abnormality of vellus hair follicle. The most common site is chest. The condition is usually seen in children and young adults but can develop at any age. Autosomal dominant inheritance has been described. The condition is characterized by multiple, small dome shaped papules, soft to firm in consistency, ranging in size from 1 to 2mm with central puncta, umbilication or a hyperkeratotic crust.

Histologically, EVHCs consists of multiple cysts located in the mid dermis lined by stratified squamous epithelium containing laminated keratinous material and varying number of transversely and obliquely cut vellushairs. The close differential diagnosis is steatocystoma multiplex and infundibular cysts. The cyst of steatocystoma multiplex arises in the sebaceous duct and has an eosinophilic lining to the cyst wall with an absent granular layer and it also contains sebaceous glands or sebocytes arising within the cyst wall. Cytokeratin studies showed that EVHC expresses cytokeratin 17 but steatocystoma express both Cytokeratin 10 and 17.

IV. CONCLUSION

Eruptive vellus hair cyst is rare condition having resemblance to other pilosebaceous cysts in

which histopathological examination plays an important role in establishing definitive diagnosis and proper management of the patient.

REFERENCES

- [1]. Lever's Histopathology of skin, 12th edition, David E Elder, pg 1892
- [2]. Eruptive vellus hair cyst: An uncommon and underdiagnosed entity; Priyanka Anand; 2018; International Journal of Trichology; Issue no: 1; Vol: 10 Pg: 31